

# ECOBAT

## Deep Cycle Batteries

### EDC12-26 (12V26Ah)

#### Specification

Nominal Voltage	12V
Nominal Capacity(20HR)	26.0AH
Dimensions	Length 165.0±2mm (6.49 inches)
	Width 126.0±2mm (4.96 inches)
	Container Height 174.0±2mm (6.85 inches)
	Total Height (with Terminal) 179.0±2mm (7.05 inches)
Approx Weight	Approx 8.70kgs (19.14lbs)
Terminal	M6
Container Material	ABS
Rated Capacity	26.0AH/1.30A (20hr, 1.80V/cell, 25°C/77°F)
	21.6AH/2.16A (10hr, 1.80V/cell, 25°C/77°F)
	20.0AH/4.00A (5hr, 1.75V/cell, 25°C/77°F)
	18.3AH/5.49A (3hr, 1.75V/cell, 25°C/77°F)
	15.6AH/15.6A (1hr, 1.60V/cell, 25°C/77°F)
Max. Discharge Current	330A (5s)
Internal Resistance	Approx 14mΩ
Operating Temp. Range	Discharge : -20~55°C (-4~131°F)
	Charge : 0~40°C (32~104°F)
	Storage : -20~50°C (-4~122°F)
Nominal Operating Temp. Range	25±3°C (77±5°F)
Cycle Use	Initial Charging Current less than 6.0A. Voltage 14.4V~15.0V at 25°C(77°F)Temp. Coefficient -30mV/°C
	No limit on Initial Charging Current Voltage 13.5V~13.8V at 25°C(77°F)Temp. Coefficient -20mV/°C
Standby Use	
Capacity affected by Temperature	40°C (104°F) 103%
	25°C (77°F) 100%
	0°C (32°F) 86%
Self Discharge	NPC series batteries may be stored for up to 6 months at 25°C(77°F) and then a freshening charge is required. For higher temperatures the time interval will be shorter.



#### Applications

- ◆ Solar or Wind Power System
- ◆ Stored energy (Photovoltaic)
- ◆ Uninterruptable Power Supply (UPS)
- ◆ Electric Power System (EPS)
- ◆ Emergency backup power supply
- ◆ Emergency light
- ◆ Railway signal
- ◆ Aircraft signal
- ◆ Alarm and security system
- ◆ Electronic apparatus and equipment
- ◆ Communication power supply
- ◆ DC power supply



ISO9001 ISO14001

#### Constant Current Discharge (Amperes) at 25 C (77F) °

F.V/Time	5min	10min	15min	20min	30min	45min	1h	2h	3h	4h	5h	6h	8h	10h	20h
1.85V/cell	38.1	29.2	24.2	20.9	16.2	11.9	10.1	5.95	4.65	3.78	3.09	2.68	2.16	1.80	0.99
1.80V/cell	51.1	37.4	29.3	24.8	19.1	13.9	11.3	6.49	5.01	4.04	3.31	2.87	2.29	1.86	1.00
1.75V/cell	57.6	41.1	32.0	26.6	19.8	14.4	11.8	6.73	5.10	4.13	3.40	2.95	2.33	1.91	1.01
1.70V/cell	63.5	44.8	34.1	28.0	20.7	15.0	12.2	6.90	5.24	4.24	3.49	3.01	2.36	1.95	1.03
1.65V/cell	70.0	48.3	36.3	29.7	21.8	15.4	12.4	7.00	5.47	4.39	3.58	3.08	2.40	1.99	1.04
1.60V/cell	77.2	52.4	38.8	31.7	23.0	16.0	12.6	7.30	5.63	4.52	3.70	3.14	2.42	2.01	1.05

#### Constant Power Discharge (Watts/cell) at 25 C (77F) °

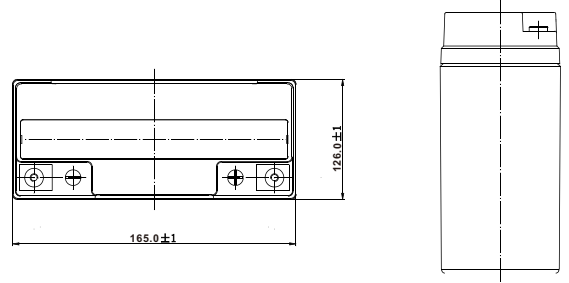
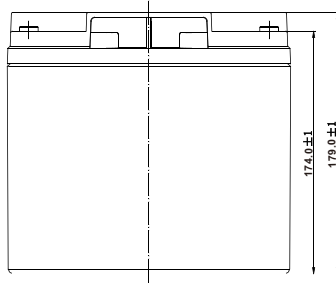
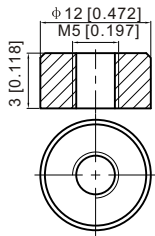
F.V/Time	5min	10min	15min	20min	30min	45min	1h	2h	3h	4h	5h	6h	8h	10h	20h
1.85V/cell	69.6	54.0	45.2	39.5	30.9	22.9	19.4	11.6	9.07	7.40	6.05	5.26	4.26	3.57	1.96
1.80V/cell	92.5	68.2	53.9	46.0	35.9	26.5	21.6	12.5	9.71	7.86	6.46	5.62	4.51	3.68	1.98
1.75V/cell	102.0	73.8	58.1	49.0	36.9	27.2	22.5	12.9	9.85	8.00	6.61	5.76	4.58	3.77	2.00
1.70V/cell	109.3	78.6	61.2	51.1	38.2	28.2	23.1	13.2	10.1	8.20	6.77	5.87	4.64	3.84	2.03
1.65V/cell	118.8	84.0	64.6	53.9	40.0	28.6	23.5	13.3	10.5	8.45	6.93	5.98	4.70	3.91	2.05
1.60V/cell	128.0	89.1	67.9	56.8	41.9	29.7	23.6	13.9	10.8	8.69	7.13	6.09	4.73	3.95	2.06

### EDC12-26 (12V26Ah)

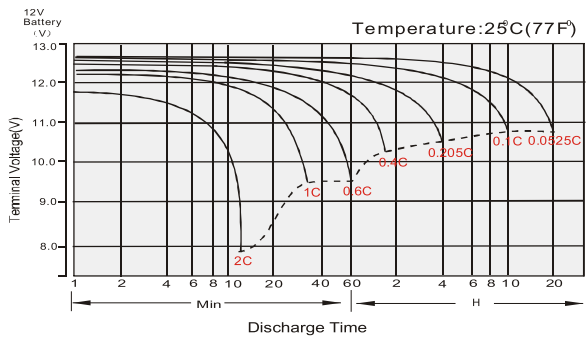
#### Dimensions

##### M6 Terminal

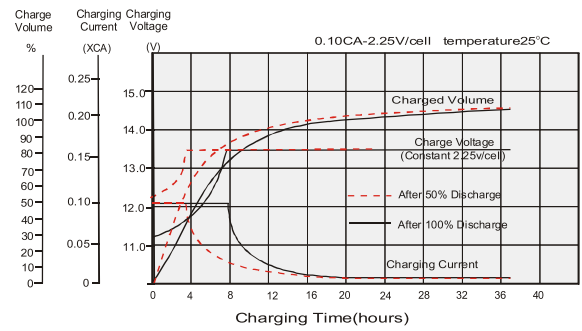
Unit: mm [inches]



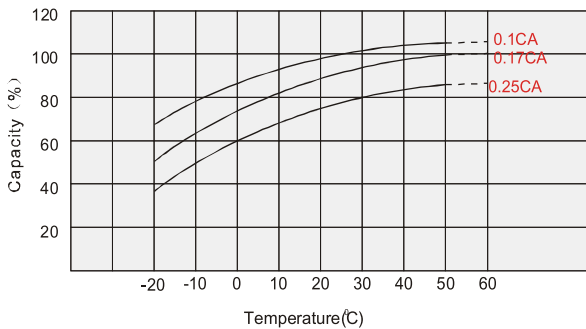
#### Discharge Characteristics



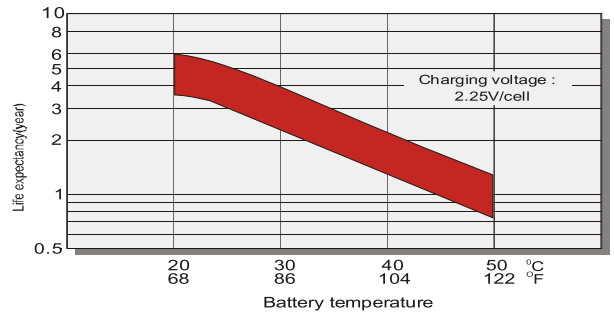
#### Float Charging Characteristics



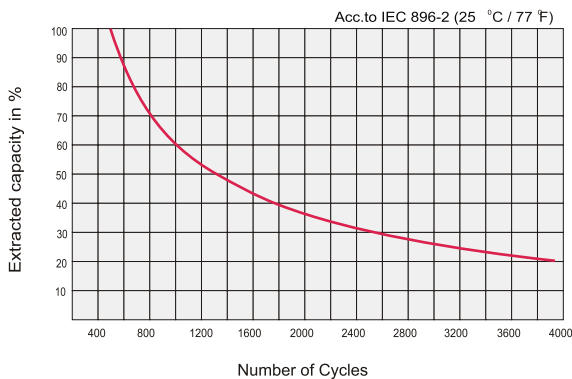
#### Temperature Effects in Relation to Battery Capacity



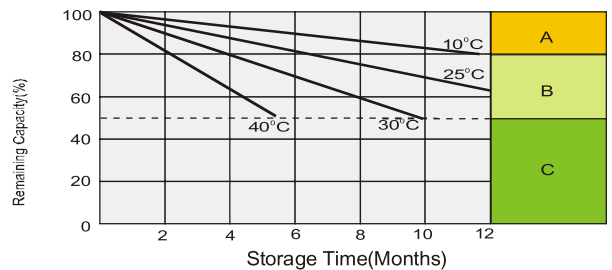
#### Effect of Temperature on Long Term Float Life



#### Cycle Life in Relation to Depth of Discharge



#### Self-discharge Characteristics



- A** No supplementary charge required.  
(Carry out supplementary charge before use if 100% capacity is required.)
- B** Supplementary charge required before use. Optional charging way as below:  
1. Charged for above 3 days at limited current 0.25CA and constant voltage 2.25V/cell.  
2. Charged for above 20 hours at limited current 0.25CA and constant voltage 2.45V/cell.  
3. Charged for 8-10 hours at limited current 0.05CA.
- C** Supplementary charge may often fail to recover the capacity.  
The battery should never be left standing till this is reached.

Specifications subject to change without prior notice.