

TECHNICAL DATA SHEET

DAB6-110EV



Applications

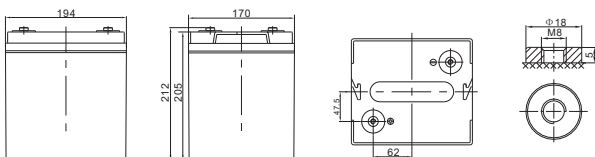
- > Electric vehicle
- > Electric wheelchair
- > Electric scooter
- > Electric play car for children
- > Garbage truck
- > Patrol car

General Features

- > High Corrosion Resistant Performance: Pb-Ca multi-alloy grid
- > High Energy Density and Power Density
- > Excellent Charge Acceptance Ability
- > Strong High and Low Temperature Performance
- > Optimized Capability of instant High-current Discharging
- > Low self-discharge rate



Dimension: 194(L)×170(W)×205(H)×212(TH) Unit: mm



Specification

| | |
|-----------------------|---|
| Nominal Voltage | 6V |
| Nominal Capacity | 100Ah |
| Design life | 5 years |
| Terminal | M8 |
| Approx. Weight | Approx 16.5kg (36.4lbs) |
| Container Material | ABS |
| Rated Capacity | 100Ah 20Hour Rate (5.00A to 5.25V) |
| | 96.2Ah 10Hour Rate (9.62A to 5.25V) |
| | 86.0Ah 5Hour Rate (17.2A to 5.25V) |
| Internal resistance | Full charged at 25°C: 7.00 mΩ |
| Operating Temperature | Discharge: -40 ~60°C (-40~ 140°F) |
| | Charge: -20 ~50°C (-4~ 122°F) |
| | Storage: -20 ~50°C (-4~ 122°F) |
| Charge Method (25 °C) | Charge current: 20.0A |
| | Float Charge: 6.85-6.90 V, recom.6.90 V(-9mV/ °C) |
| | Cycle charge: 7.14 -7.20 V, recom.7.20 V(-15mV/ °C) |
| Self discharge | 3% of capacity declined per month at 25°C |

TECHNICAL DATA SHEET

DAB6-110EV

Constant Current Discharge Characteristics Unit: A (25°C, 77°F)

| F.V/Time | 10MIN | 15MIN | 30MIN | 1HR | 2HR | 3HR | 4HR | 5HR | 8HR | 10HR | 20HR |
|----------|-------|-------|-------|------|------|------|------|------|------|------|------|
| 1.60V | 219 | 175 | 108 | 60.7 | 36.2 | 28.2 | 22.1 | 18.8 | 12.1 | 10.0 | 5.18 |
| 1.65V | 201 | 164 | 102 | 58.7 | 35.0 | 27.3 | 21.4 | 18.2 | 12.0 | 9.91 | 5.16 |
| 1.70V | 187 | 154 | 96.8 | 56.8 | 34.0 | 26.2 | 20.8 | 17.7 | 11.8 | 9.72 | 5.09 |
| 1.75V | 171 | 144 | 93.0 | 55.0 | 32.7 | 25.5 | 20.2 | 17.2 | 11.6 | 9.62 | 5.00 |
| 1.80V | 156 | 132 | 89.6 | 52.6 | 31.6 | 25.0 | 19.7 | 17.0 | 11.4 | 9.52 | 4.95 |
| 1.85V | 122 | 109 | 75.9 | 46.9 | 28.9 | 23.3 | 18.5 | 15.7 | 10.7 | 8.95 | 4.91 |

Constant Power Discharge Characteristics Unit: W/cell (25°C, 77°F)

| F.V/Time | 10MIN | 15MIN | 30MIN | 1HR | 2HR | 3HR | 4HR | 5HR | 8HR | 10HR | 20HR |
|----------|-------|-------|-------|------|------|------|------|------|------|------|------|
| 1.60V | 372 | 306 | 196 | 114 | 68.4 | 53.5 | 42.6 | 35.6 | 23.5 | 19.6 | 10.3 |
| 1.65V | 358 | 297 | 191 | 112 | 66.6 | 52.2 | 41.6 | 34.6 | 23.3 | 19.4 | 10.3 |
| 1.70V | 334 | 282 | 182 | 109 | 64.9 | 50.2 | 40.2 | 33.8 | 23.0 | 19.0 | 10.2 |
| 1.75V | 311 | 266 | 176 | 106 | 62.6 | 48.9 | 39.3 | 33.0 | 22.7 | 18.9 | 10.0 |
| 1.80V | 287 | 246 | 170 | 101 | 61.2 | 48.7 | 38.5 | 32.5 | 22.3 | 18.7 | 9.88 |
| 1.85V | 227 | 206 | 146 | 91.1 | 56.3 | 45.4 | 36.3 | 30.1 | 21.1 | 17.6 | 9.79 |

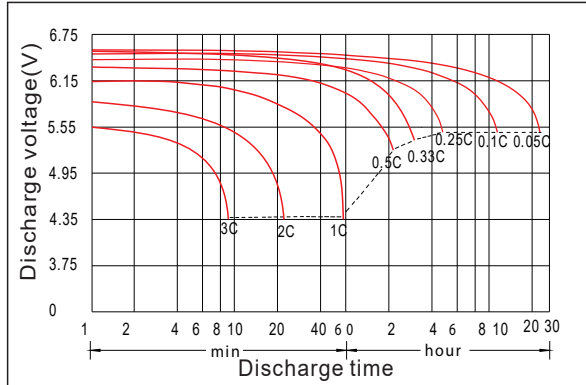
Disclaimer: Manufacturers have the right to self-modify the parameters of the product updates, please keep in touch with manufacturers to obtain the latest information.

Charger recommendations

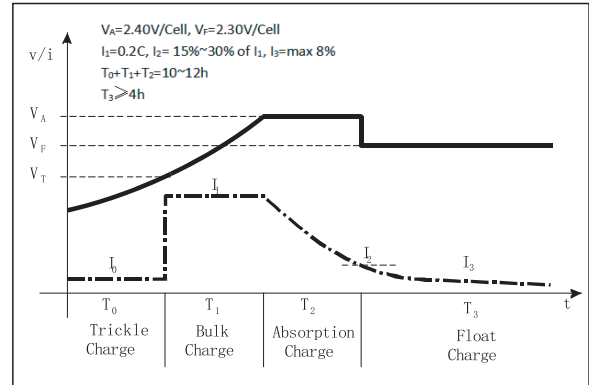
| Type of charger | Zivan | AQHF WP | AQHF24-30FC G2 |
|------------------|-----------------|------------|----------------|
| Matching profile | AGM =BA1+CU2 | AMG SLA | AGM |

Max. charging current 2.4Vpc

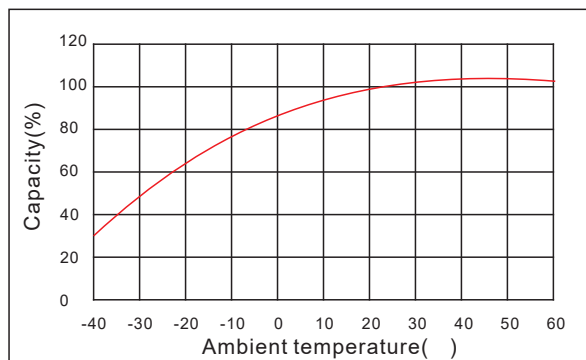
Discharge characteristic



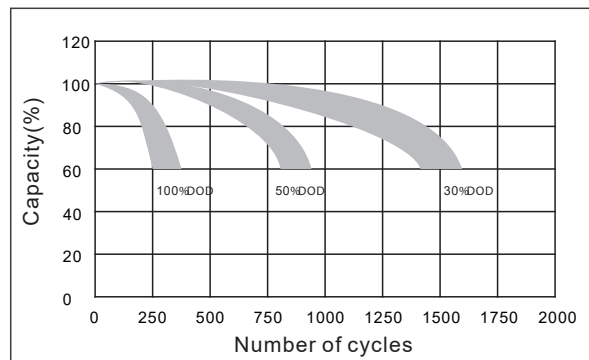
Charging characteristic



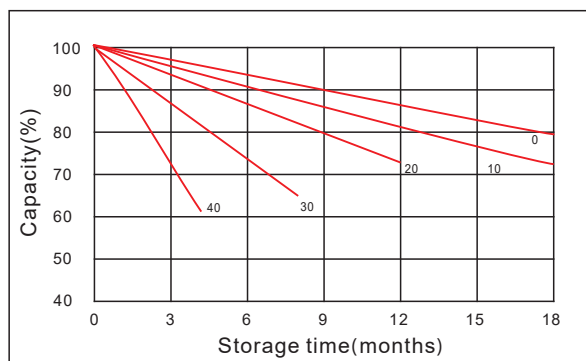
The effect of temperature on capacity



The effect of discharge depth on cycle life



Curves of self-discharge



Curves of open circuit voltage vs. capacity

