

TECHNICAL DATA SHEET

DGY6-110EV

Applications



CYCLIC



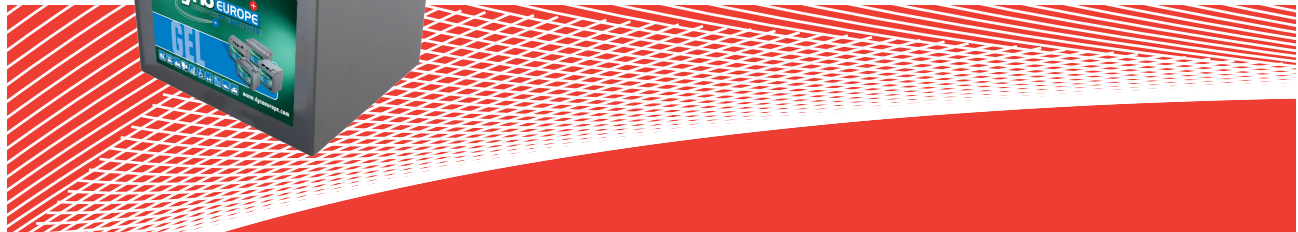
STATIONARY



SOLAR



MARINE

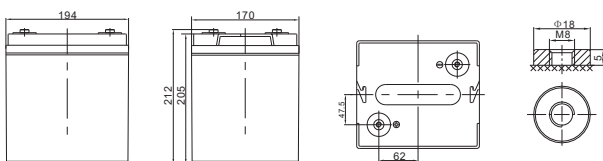


General Features

- > Nanosilica colloidal electrolyte and high tin positive plate alloy design to enhance battery performance
- > Relatively rich electrolyte, high temperature and low temperature performance is superior
- > Long cycle life, excellent deep cycle discharge ability
- > Excellent charge acceptance ability
- > Precision sealing technology
- > Long life



Dimension: 194(L)×170(W)×205(H)×212(TH) Unit: mm



Applications

- > Electric vehicle
- > Electric wheelchair
- > Electric scooter
- > Electric play car for children
- > Garbage truck
- > Patrol car

Specification

Nominal Voltage	6V
Nominal Capacity	100Ah
Design life	5 years
Terminal	M8
Approx. Weight	Approx 16.5kg (36.4lbs)
Container Material	ABS
Rated Capacity	100Ah 20Hour Rate (5.00A to 5.25V)
	96.2Ah 10Hour Rate (9.62A to 5.25V)
	86.0Ah 5Hour Rate (17.2A to 5.25V)
Internal resistance	Full charged at 25°C: 7.00 mΩ
Operating Temperature	Discharge: -40 ~60°C (-40~ 140°F)
	Charge: -20 ~50°C (-4~ 122°F)
	Storage: -20 ~50°C (-4~ 122°F)
Charge Method (25 °C)	Charge current: 20.0A
	Float Charge: 6.85-6.90 V, recom.6.90 V(-9mV/ °C)
	Cycle charge: 7.14 -7.20 V, recom.7.20 V(-15mV/ °C)
Self discharge	3% of capacity declined per month at 25°C

TECHNICAL DATA SHEET

DGY6-110EV

Constant Current Discharge Characteristics Unit: A (25°C, 77°F)

F.V/Time	10MIN	15MIN	30MIN	1HR	2HR	3HR	4HR	5HR	8HR	10HR	20HR
1.60V	219	175	108	60.7	36.2	28.2	22.1	18.8	12.1	10.0	5.18
1.65V	201	164	102	58.7	35.0	27.3	21.4	18.2	12.0	9.91	5.16
1.70V	187	154	96.8	56.8	34.0	26.2	20.8	17.7	11.8	9.72	5.09
1.75V	171	144	93.0	55.0	32.7	25.5	20.2	17.2	11.6	9.62	5.00
1.80V	156	132	89.6	52.6	31.6	25.0	19.7	17.0	11.4	9.52	4.95
1.85V	122	109	75.9	46.9	28.9	23.3	18.5	15.7	10.7	8.95	4.91

Constant Power Discharge Characteristics Unit: W/cell (25°C, 77°F)

F.V/Time	10MIN	15MIN	30MIN	1HR	2HR	3HR	4HR	5HR	8HR	10HR	20HR
1.60V	372	306	196	114	68.4	53.5	42.6	35.6	23.5	19.6	10.3
1.65V	358	297	191	112	66.6	52.2	41.6	34.6	23.3	19.4	10.3
1.70V	334	282	182	109	64.9	50.2	40.2	33.8	23.0	19.0	10.2
1.75V	311	266	176	106	62.6	48.9	39.3	33.0	22.7	18.9	10.0
1.80V	287	246	170	101	61.2	48.7	38.5	32.5	22.3	18.7	9.88
1.85V	227	206	146	91.1	56.3	45.4	36.3	30.1	21.1	17.6	9.79

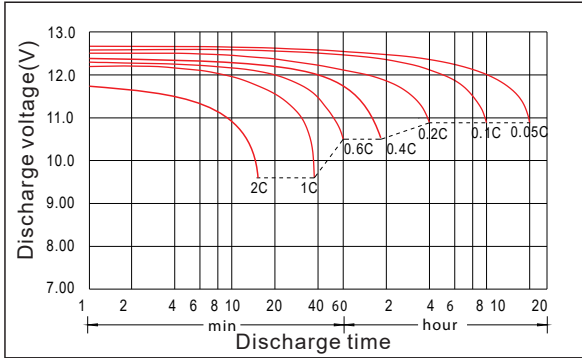
Disclaimer: Manufacturers have the right to self-modify the parameters of the product updates, please keep in touch with manufacturers to obtain the latest information.

Charger recommendations

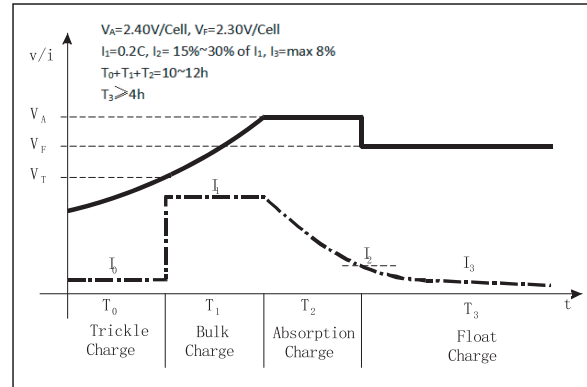
Type of charger	Zivan	AQHF WP	AQHF24-30FC G2
Matching profile	AGM =BA1+CU2	AMG SLA	AGM

Max. charging current 2.4Vpc

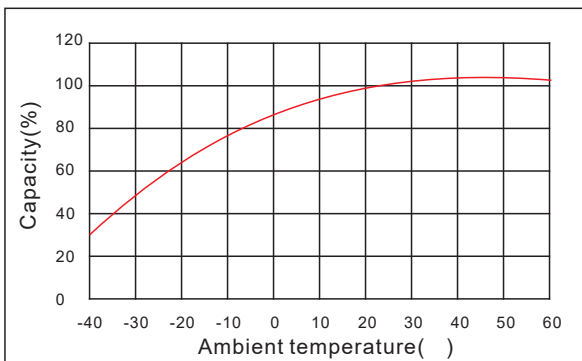
Discharge characteristic



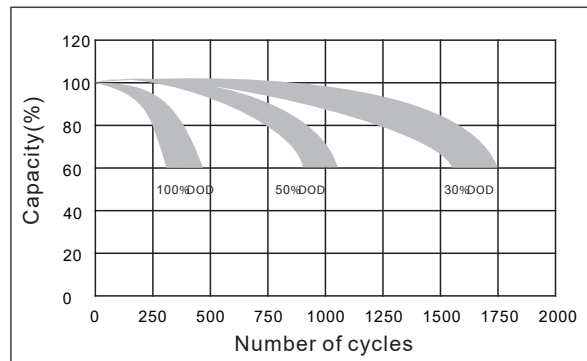
Charging characteristic



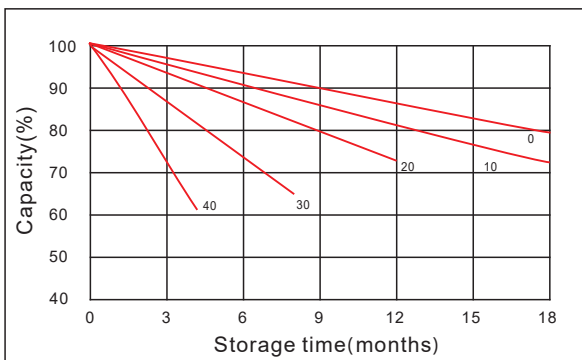
The effect of temperature on capacity



The effect of discharge depth on cycle life



Curves of self-discharge



Curves of open circuit voltage vs. capacity

