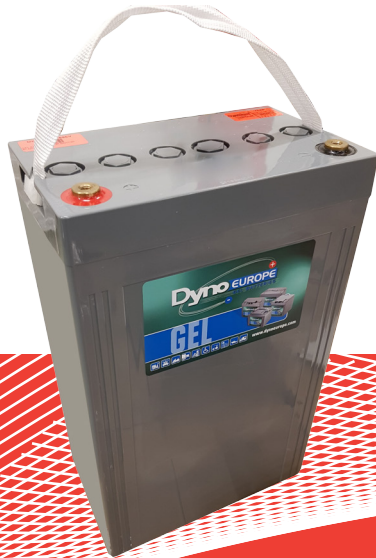


TECHNICAL DATA SHEET

DGY12-69EV



Applications



CYCLIC



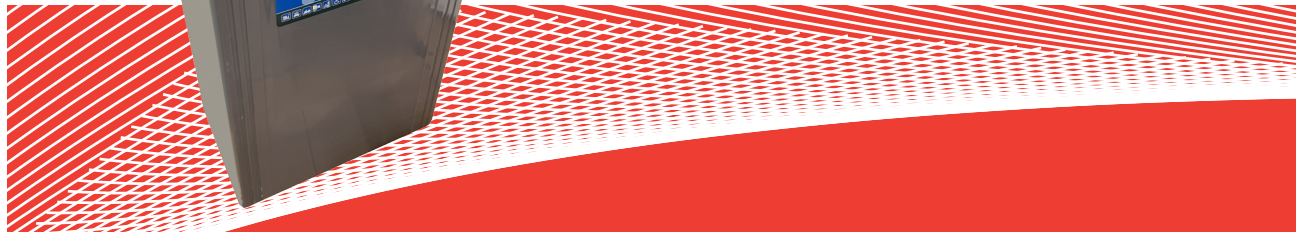
STATIONARY



SOLAR



MARINE



Applications

- > Electric vehicle
- > Electric wheelchair
- > Electric scooter
- > Electric play car for children
- > Garbage truck
- > Patrol car

Specification

Nominal Voltage	12V
Nominal Capacity	69Ah
Design life	15 years
Terminal	M8
Approx. Weight	Approx 30.4kg (67.1lbs)
Container Material	ABS

Rated Capacity	86.6Ah	20Hour Rate (4.33 A to 10.5V)
	77.7Ah	10Hour Rate (7.77 A to 10.5V)
	69.3Ah	5Hour Rate (13.86 A to 10.5V)

Internal resistance	Full charged at 25°C:	8.4 mΩ
Max. Discharge Current	830A(5S)	
Operating Temperature	Discharge:	-40 ~60°C (-40 ~ 140°F)
	Charge:	-20 ~50°C (-4 ~ 122°F)
	Storage:	-20 ~50°C (-4 ~ 122°F)

Charge current 13.8A

Charge Method (25°C)	Float Charge:	13.5-13.8V, recom. 13.8V (-18mV/°C)
	Cycle charge:	14.28-14.4V, recom. 14.4V (-30mV/°C)

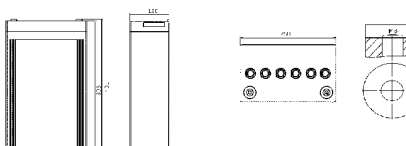
Self discharge 2% of capacity declined per month at 25°C

General Features

- > Nanosilica colloidal electrolyte and high tin positive plate alloy design to enhance battery performance
- > Relatively rich electrolyte, high temperature and low temperature performance is superior
- > Long cycle life, excellent deep cycle discharge ability
- > Excellent charge acceptance ability
- > Precision sealing technology
- > Long life



Dimension: 250(L)×150(W)×396(H)×401TH) Unit: mm



TECHNICAL DATA SHEET

DGY12-69EV

Constant Current Discharge Characteristics Unit: A (25°C, 77°F)

F.V/Time	10MIN	15MIN	30MIN	1HR	2HR	3HR	4HR	5HR	8HR	10HR	20HR
1.60V	141.64	114.89	75.28	51.88	28.59	21.53	17.18	14.98	9.73	8.09	4.51
1.65V	134.03	109.90	72.39	50.14	27.80	20.88	16.71	14.59	9.63	8.01	4.43
1.70V	123.28	102.82	69.25	48.40	27.02	20.30	16.26	14.21	9.50	7.88	4.38
1.75V	112.79	95.74	66.10	46.66	25.94	19.70	15.84	13.86	9.36	7.77	4.33
1.80V	102.03	88.39	63.21	44.92	25.02	19.10	15.40	13.50	9.21	7.67	4.28
1.85V	83.41	73.44	54.56	40.29	22.92	17.65	14.30	12.60	8.63	7.22	4.07

Constant Power Discharge Characteristics Unit: W/cell (25°C, 77°F)

F.V/Time	10MIN	15MIN	30MIN	1HR	2HR	3HR	4HR	5HR	8HR	10HR	20HR
1.60V	241.41	201.95	137.65	88.90	54.78	41.32	33.19	27.85	19.13	15.88	8.91
1.65V	230.50	194.29	133.47	86.35	53.16	40.39	32.50	27.39	18.92	15.69	8.80
1.70V	218.66	186.39	129.06	84.03	51.76	39.23	31.57	26.69	18.71	15.51	8.70
1.75V	203.80	175.95	124.65	81.47	50.14	38.30	30.87	26.23	18.48	15.32	8.61
1.80V	187.79	164.81	120.24	78.69	48.75	37.37	30.18	25.53	18.22	15.13	8.52
1.85V	156.22	138.58	104.69	71.03	44.80	34.59	28.09	23.91	17.13	14.28	8.10

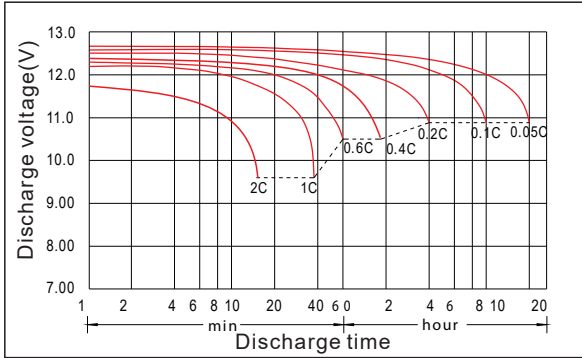
Disclaimer: Manufacturers have the right to self-modify the parameters of the product updates, please keep in touch with manufacturers to obtain the latest information.

Charger recommendations

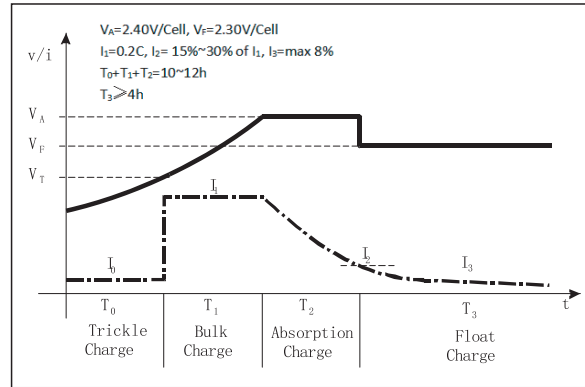
Type of charger	Zivan	AQHF WP	AQHF24-30FC G2
Matching profile	AGM =BA1+CU2	AMG SLA	AGM

Max. charging current 2.4Vpc

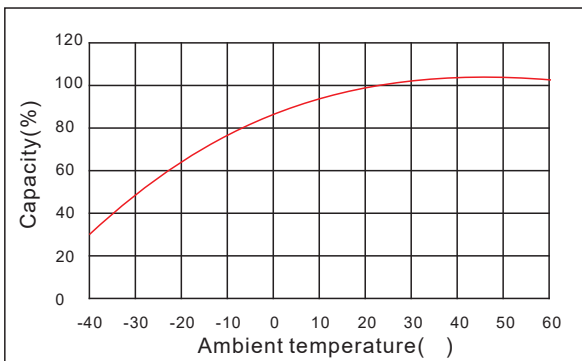
Discharge characteristic



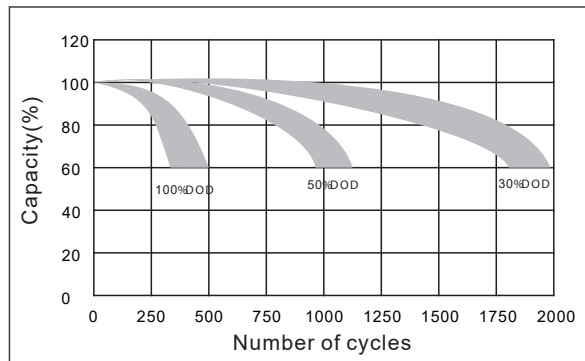
Charging characteristic



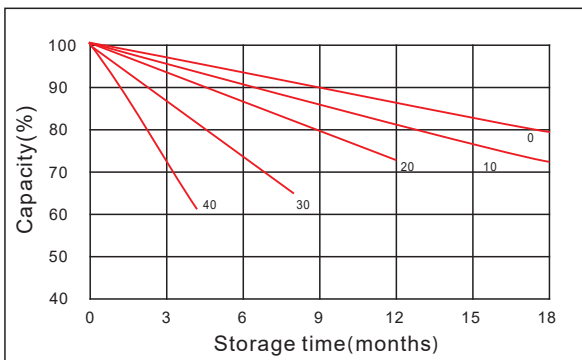
The effect of temperature on capacity



The effect of discharge depth on cycle life



Curves of self-discharge



Curves of open circuit voltage vs. capacity

